



Donnington Wood Infant School & Nursery

Newsletter

Friday 10th October 2025

On Monday Classes 1 & 2 walked to ALDI to go shopping for ingredients for their fruit salads. They have been busy learning how to safely chop and grate and are using these skills to prepare a fruit salad.

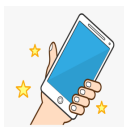
Today is World Mental Health Day and children in school have been thinking about how we look after ourselves in assembly today. Over the next few months we will be



having a focus on the importance of sleep (for children and adults). Look out for flyers and Facebook posts about sleep. If you would like any specific support for your child for sleep or bedtime routines then please let us know we as we have more information and support we can offer.

Phones

Please can we request that adults dropping off or collecting from school or nursery are not using mobile phones for calls (particularly video calls). This is to ensure we respect the privacy of everyone on site.



Breakfast Club

7:45 - 8:40

£2 per day

Please come to the main office door for Breakfast Club.



Collecting from nursery and school



Please let your child's teacher or the office know if someone different is collecting your child from nursery or school. Even if the person collecting knows the password we still need a message from you to let us know. We do this to keep everyone safe.

Do you want to help your child learn to read?

Come along and meet with us to find out how we teach the children in school and what you can do to help at home.

**Tuesday 14th October
8:45-9:15 in the school hall.**



Parking

We have received a number of complaints about parking on



Baldwin Webb Avenue from local residents this week. When parents are parking they must not block driveways, however quick they will be. Please do not stop in the road to let people get out.

We know that there is more traffic on Baldwin Webb Avenue while the Church

Walk entrance is closed. We really encourage anyone who can walk to do this, and if you must drive then consider parking a little further away from school and walking the last part of your journey.

The yellow zig-zag markings at all 3 entrances are designed to keep everyone safe. Please do not park on the yellow zigzags (this include taxis).

Parking Enforcement Officers have already visited and will be coming regularly over coming months.

Please do not drive onto the school site unless you have a blue disabled badge.

Attendance

Whole School - 93.23%

Class 1 - 94.12%

Class 2 - 98.13%

Class 3 - 97.47%

Class 4 - 96.54%

Class 5 - 93.18%

Class 6 - 95.69%



Lates = 25

Lost Learning =

4 hours & 12 minutes

Early Bird = Class 4

Golden Book

Class 1

Whole Class

Class 2

Whole Class

Class 3

Willow-Rose & Modaser

Class 4

Layon & Joel

Class 5

Jaydon & Toby

Class 6

Oluwasemilore & Harvey

Nursery

Marely & Isla-Rose

Readers of the Week

Class 1

Jack

Class 2

Asyiah

Class 3

Theo

Class 4

Reuben

Class 5

Ororo

Class 6

Rakshan

Starting School September 2026

If you have a child born between
1st September 2021 and 31st August 2022
you must apply online at
www.telford.gov.uk/admissions
There are no paper application forms.

Even if your child is in our nursery you must still apply online by 15th January 2026

If you have any questions or do not have access to the internet please talk to the office.

Parents of Year 2 children need to apply for Junior School using the same online system.

Absence from school and nursery

Please make sure you contact the office (email



donnwood.infants@taw.org.uk or call 386640) if your child is absent from school or nursery. It is really important that we know why your child is absent. Please note that the office is staffed 8:30am to 4:00pm. It can get very busy in the mornings with phone calls and visitors. If the phone is not answered then please leave a message on the answer machine.



PE in school

Children wear their PE kit to school all day on their PE day.
They do not need to bring school uniform to change into.

Reception (Classes 5 & 6)
Monday

Year 1 (Classes 3 & 4)
Tuesday & Wednesday

Year 2 (Classes 1 & 2)
Wednesday & Friday

PE Kit

plain white t-shirt, navy/black shorts/joggers/leggings, cardigan/school jumper, trainers/plimsolls.

Times Of The Day

School

8:40 - doors open (close at 8:45)
3:10 - end of the day

Nursery

8:40 - morning doors open (close at 8:50)
11:30 - doors open (session ends 11:40)

12:30 - afternoon doors open (close at 12:40)
3:20 - doors open (session ends 3:30)

If your child is late then please come to the office and a member of staff will take them to class.



Medication



If your child requires prescribed medication during the day then please go to the office to complete a permission form. The medication will need to be in the original packaging with the pharmacy label attached. We are also able to give over the counter pain relief (such as Calpol) with permission. Full details can be found on the website in our 'Administration of Medication' policy.

Reading at home

We have been really encouraged to see that there are children who are reading at home regularly. We know that it is helping them to become fluent and confident readers. Children read regularly in school but with regular practice at home they make even better progress.

Please don't forget to write in your child's reading diary when they read at home. If you have any challenges at home with your child's reading then please let us know and we will see what we can do to help.



Please make sure all your child's school uniform, coat, shoes and PE kit is labelled with their name.